

Living in the Wider World 2

Pupils will consider jobs that people have, discussing common myths and gender stereotypes related to work. They will challenge stereotypes through examples of role models in different fields of work. They will know about some of the skills needed to do a job and how their interests, skills and achievements link to future jobs. Each pupil will set targets that they would like to achieve in the year.

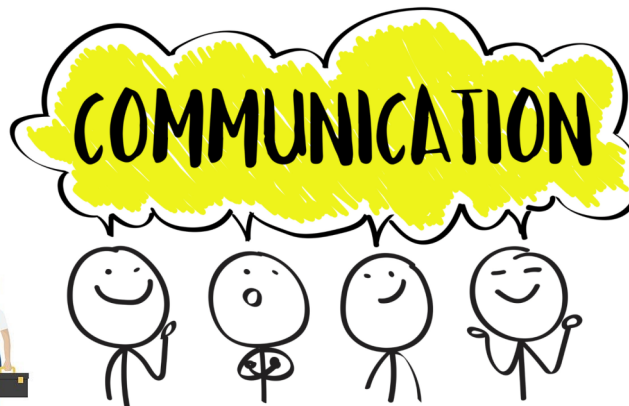
Key knowledge and threads

Key thread: Living in the Wider World

- Know at least 10 jobs that people may have from different sectors
- Know that common myths and gender stereotypes related to work exist
- Challenge stereotypes through examples of role models in different fields of work (male nurses, female footballers, women in STEM)
- Know that communication, teamwork, problem-solving skills are needed to do a job
- Know their interests, skills and achievements link to future jobs
- Know that SMART targets are specific, measurable, achievable, realistic, time bound targets
- Use SMART targets to set goals that they would like to achieve this year



S	M	A	R	T
Specific	Measurable	Achievable	Relevant	Time-bound
State what you'll do Use action words	Provide a way to evaluate Use metrics or data targets	Within your scope Possible to accomplish, attainable	Makes sense within your job function Improves the business in some way	State when you'll get it done Be specific on date or timeframe



Vocabulary Abstract

Sectors—an area different from others
Myths—a widely held false belief
Gender—the social, psychological, cultural and behavioural aspects of being a man, woman, or other gender identity
Stereotypes—general belief about a group of people
Role model—a person looked at as a good example
Communication – exchanging of information